



# BT TIMES

Shire of Broomehill-  
Tambellup

VOLUME 3 ISSUE 9

JULY 2011

*Your local newsletter covering the Broomehill and Tambellup communities.*

**TAMBELLUP**  
JUNIOR FOOTBALL CLUB

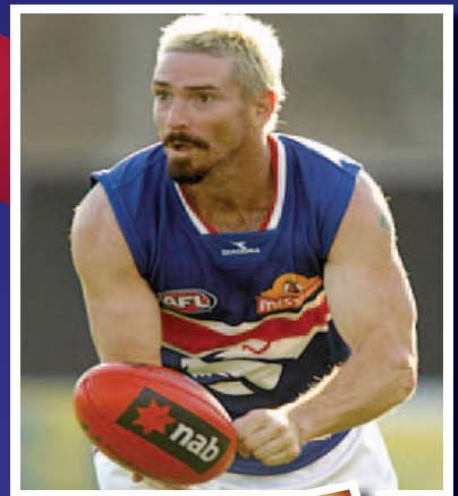


  
**Gnowangerup**  
FOOTBALL CLUB

## **PRESENTS** **JASON** **AKERMANIS**

*Controversial & Outspoken  
Brownlow Medallist*

**'AKER'  
UNLEASHED**



**Date:** Tuesday 26 July, 2011

**Time:** 5pm (Junior clinic with Aker)  
5.45pm (Seniors Training with Aker)  
7pm Onwards (Function)

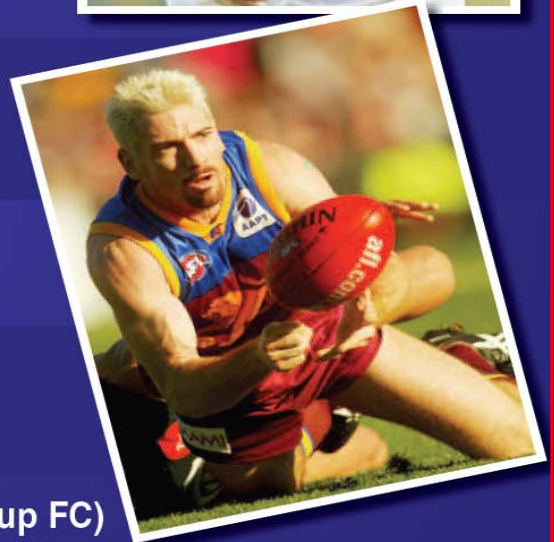
**Venue:** Tambellup Town Hall  
Norrish St, Tambellup

**Cost:** \$25.00 Per Person ( pre sale)  
\$30.00 Per Person ( door sale)  
(Includes Beef & Gravy Roll)

**Contact:** Ernie Ph: 0427 271 215 (Gnowangerup FC)  
Alan Ph: 0428 258 289 (Tambellup JFC)

\*\*\*TICKET SALES—MARIO CRISTINELLI 0427 258 118\*\*\*

**FULL BAR  
FACILITIES AVAILABLE  
THROUGHOUT THE EVENING**



**SPORTS MEMORABILIA AUCTION & RAFFLE**  
(CASH / CHEQUE PAYMENT ON NIGHT REQUIRED)





# Beyond Gardens



## SPECIAL THANKS TO:

Shire of Broomehill-Tambellup,  
through funding support of the  
Dept Agriculture and Food Dry  
Season Assistance scheme .

**TOP**—Di House, Bev Taylor, Marg Veitch, Betty Hams, Thalma Nazzari  
**MIDDLE L—R**; Peter Coppin discussing fruit fly in Bill Waldron's apple,  
The crowd, Carole Johnston, Rod King, Anne-Marie Lockyer, Marie  
White, Joylene Presser  
**BOTTOM**—Helen Wills, John Colwill, Pam Hull

Damien, Kristy and Abby Boyle  
are delighted to announce the  
arrival of

**ZAC PATRICK BOYLE**

Born on 27 June 2011, 7lb 4oz,  
51cm

*Welcome to our BT Times Sub Editor!!*



## HAPPY 90TH BIRTHDAY

Mona Hams—31 May

Kevin Hams—22 June



Congratulations to  
Caroline and Rohan Sprigg  
on the arrival of their baby  
girl on June 24.





### **SHIRE OF BROOMEHILL—TAMBELLUP** **SKATE PARK UPGRADES**

Regulars to the Tambellup skate park will have noticed a new acquisition - the take off ramp arrived during June, complementing the existing equipment well. We have it on good authority that it has been given a workout already by those who are able!

Work to upgrade the Broomehill skate park is continuing behind the scenes. New equipment is being manufactured locally, before being set into an extended concrete area. Watch this space!



### **Tambellup Sub Centre St John Ambulance**

**A First Aid Course will be held on 7th July at  
the Tambellup Business Centre  
from 8.30am - 4.00pm.**

It is a one day format where participants work through a CD prior to the day to do the theory.

There are still a couple of places available.

If you would like to take part contact Trevor 98251182 to arrange pick up of CD. Do this ASAP to allow time for you to work through the CD. I only have Windows versions on hand.

The cost payable on the day is \$110.

### **Tambellup Agricultural Society**

## **NEXT MEETING**

**Tuesday 12th July at 7.30pm**

**at the Tambellup CRC**

As this is a Stewards meeting, please have any changes to Schedule sections to the Secretary, Jenni Bradshaw on 0417 090 045 prior to the meeting.

### **SHIRE OF BROOMEHILL-TAMBELLUP**

**Phone: 98253555**

**Fax: 98251152**

**Email: [mail@shirebt.wa.gov.au](mailto:mail@shirebt.wa.gov.au)**

**The next meeting of Council will be held on  
Thursday 21 July 2011 commencing at 4.00pm  
in the Tambellup Council Chambers. Members  
of the public are welcome to attend all Council  
meetings.**

### **Council Agendas and Minutes**

Agendas and Minutes from every Council and Council Committee meeting are available at the Shire Administration Offices and Tambellup Community Resource Centre for perusal. These documents are available in alternative formats on request for people with a disability.

Agendas and Minutes can be accessed online by browsing to [www.shirebt.wa.gov.au](http://www.shirebt.wa.gov.au) and clicking on the "Our Shire" tab.



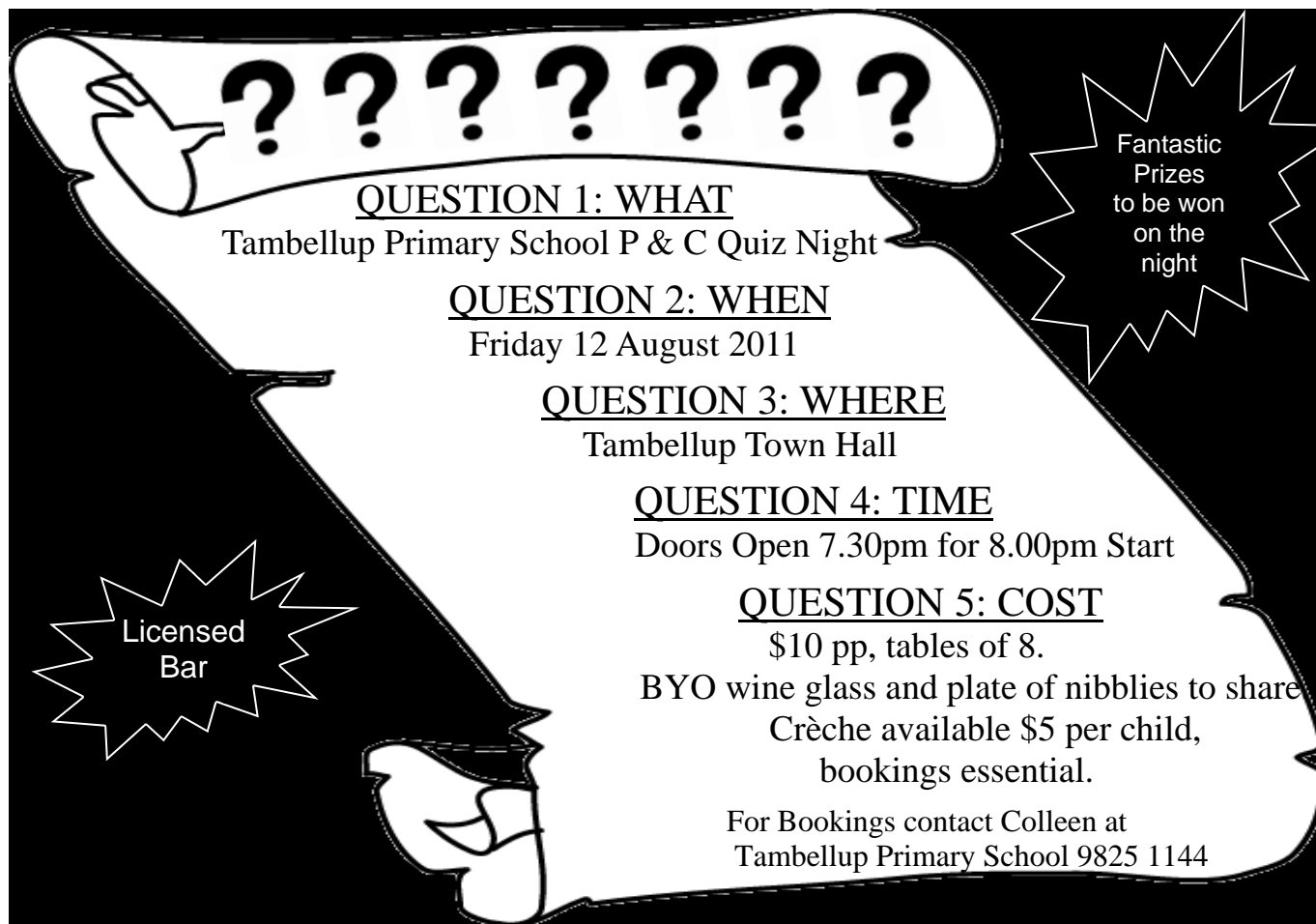
### **SHIRE OF BROOMEHILL—TAMBELLUP**

## **A LOAD OF RUBBISH.....**

Residents are again reminded not to deposit hot coals at the tip, or in your green wheelie bin. A situation occurred recently when a bin containing hot coals was emptied into the rubbish truck, starting a fire. Fortunately, the incident occurred early in the run and the driver was able to control the fire before damage was incurred. If it had happened at the end of the run when the truck was full, the impact would have been far more serious, potentially fatal. Coals and ashes should be left to cool down completely before disposal.

On another matter, residents are requested, when dropping off old fencing wire at either tip, to remove all fence posts from the wire. Wire from the tips is collected by scrap merchants, and they have advised they will not collect any wire containing fence posts of any kind. Your cooperation in this matter is appreciated.





**QUESTION 1: WHAT**  
Tambellup Primary School P & C Quiz Night

**QUESTION 2: WHEN**  
Friday 12 August 2011

**QUESTION 3: WHERE**  
Tambellup Town Hall

**QUESTION 4: TIME**  
Doors Open 7.30pm for 8.00pm Start

**QUESTION 5: COST**  
\$10 pp, tables of 8.  
BYO wine glass and plate of nibblies to share  
Crèche available \$5 per child,  
bookings essential.

For Bookings contact Colleen at  
Tambellup Primary School 9825 1144

Fantastic Prizes to be won on the night

Licensed Bar

### **SHIRE OF BROOMEHILL-TAMBELLUP**

**Shire of Broomehill Town Planning Scheme No 1**

### **Notice of Application for Planning Consent**

In accordance with the provisions of the above Scheme the council of the Shire of Broomehill-Tambellup hereby gives notice that an Application for Planning Consent has been received from Co-operative Bulk Handling Ltd for an extension to the planning approval that has been given for the temporary installation of two bulk heads which are currently located on Lot 531 Nardlah Road Broomehill East.

A copy of the application can be viewed at the Council offices, 46-48 Norrish Street Tambellup or 30360 Great Southern Highway Broomehill during office hours.

All comments must be in writing, addressed to the Chief Executive Officer and received by 4.00pm on 20 July 2011.

JOANNE TREZONA  
Chief Executive Officer

### **RSL KATANNING SUB-BRANCH**

#### **Meetings**

The Scout Hall, Cnr Park & Conroy St  
Last Friday of each month

Meeting Starts 6.00pm, Barbeque starts 7.00pm

Cost \$6.00 per person for meat pack

Bring salad to share and own drinks

Tea and coffee supplied

Membership fees—ex or serving military \$40 per year,  
affiliate members \$15 per year.

For more information contact President Chrissie Day 9822 8036 or Secretary Lynn Dilley 9824 1123

### **Hidden Treasures of the Great Southern**

#### **NEXT MEETING;**

4 JULY 2011

GNOWANGERUP

9.30AM

T: DI—9821 0068

E: [hiddentreasures@westnet.com.au](mailto:hiddentreasures@westnet.com.au)

W: [www.hiddentreasures.com.au](http://www.hiddentreasures.com.au)





**SHIRE OF BROOMEHILL-TAMBELLUP****ROAD DEDICATION**

It is hereby notified for public information that in accordance with Section 56 of the Land Administration Act 1997, the Shire of Broomehill-Tambellup intends to make an application to the Minister for Lands to dedicate portions of Lavarock Street and Norrish (Tieline) Road, Broomehill Village.

Plans in respect of the proposed dedication may be inspected at the Offices of the Council, 46-48 Norrish Street Tambellup and 30360 Great Southern Highway Broomehill. Objections to the proposal must be lodged in writing within (35) days of this notice.

**JM Trezona**

**CHIEF EXECUTIVE OFFICER**

**Dated 29 June 2011**

# Daffodil Day

## Fundraising Evening

Friday 26 August 2011

Tambellup Town Hall

6pm til late

\$35 pp (inc meal and gift)

RSVP Tambellup CRC 9825 1177

**\*\*Limit 100 tickets\*\***

*Guest Speaker: Sheryl McCorry*  
Breast Cancer survivor and author of  
Diamonds and Dust and Stars over  
Shiralee.

Dress Theme:

Dust off your diamonds and shine like a queen!

**\*\*Stalls\*\***

**\*\*Mini Beauty Parlour\*\***

**\*\*Chain of Hope\*\***

**daffodil day**  
Cancer Council

**Threads On Line**  
Railway Station, Norrish Street Tambellup WA 6320  
Email: coralgreen@bigpond.com Phone: 9825 1542




**SALE**  
20% off store wide  
Other than stranded cotton

**July 12th—21st**  
Open Tuesdays and Thursdays  
10 am to 3.00pm

**SHIRE OF BROOMEHILL—TAMBELLUP****MAINTENANCE GRADING**

Winter grading of local roads has commenced, however, as with farming, the lack of winter rains has made for a slow start. The graders will be working at every opportunity, and we ask for your patience as they work across the shire. If you are aware of a particular road which needs urgent attention, please contact the Shire office on 98253555.



**MENTAL HEALTH FIRST AID**

**WANT TO HELP**  
the mental health of your community?

**The 2nd edition Mental Health First Aid Course IS NOW AVAILABLE**

This 12-hour Mental Health First Aid course teaches members of the public first aid skills for helping people experiencing a mental health crisis, mental health problems or the early stages of a mental illness.

**Where:** Pioneer Room - Katanning Leisure Centre  
**When:** Tuesday 26th & Wednesday 27th July 2011  
**Instructor:** Andrea Preece & Margaret Cole  
**Cost:** \$50 Community members & \$100 Organisations  
**Enrolment deadline:** Friday 22nd July 2011

If you're interested in attending this 12-hour Standard MHFA course, please see contact details below:

**Contact:** Jo Drayton - Project Coordinator - Rural Community Support Service  
**Phone:** (08) 9881 0790 or 0408 670007  
**Email:** Jo.Drayton@health.wa.gov.au

For further information on the Mental Health First Aid Training and Research Program, please visit our website at [www.mhfa.com.au](http://www.mhfa.com.au)

**www.mhfa.com.au**

• DEPRESSION • ANXIETY • PSYCHOSIS • SUBSTANCE MISUSE •  
• SUICIDAL THOUGHTS & BEHAVIOURS • NON-SUICIDAL SELF-INJURY • PANIC ATTACKS • AGGRESSION •

**SHIRE OF BROOMEHILL—TAMBELLUP****LOCAL EMERGENCY MANAGEMENT COMMITTEE**

The Broomehill-Tambellup Local Emergency Management Committee (LEMC) was formed in response to the introduction of the Emergency Management Act 2005. The committee consists of representatives from a range of agencies and services which are active in our shire, including Police, St John Ambulance, Red Cross, fire brigades, the Emergency Service unit, schools, and the Shire itself. Other outside agencies which are involved include FESA, Department for Child Protection, utility providers such as Western Power, Telstra, Water Corporation, and government agencies including the Department for Agriculture and Food, Main Roads, and many more.

A core function of the committee was initially to develop an Emergency Management Plan, which would be activated in response to an emergency situation affecting our communities. With that plan now in place, the committee is required to meet at least four times each year to monitor and test the plan, to ensure it remains relevant to our situation.

At a meeting held recently, a desktop exercise was conducted. This involves a hypothetical emergency scenario being presented to the committee, with discussion based on the response of each agency or service represented.

The scenario presented involved a multi vehicle road crash which 'occurred' on the Tambellup West Road Bridge, late on a winter's afternoon. With a tourist coach, a stock truck carrying cattle and chemicals, and a foreign tourist in a hire car involved in the 'accident', fatalities, the river at full flow thanks to recent heavy rains, bad weather about to set in and significant damage to the bridge, the scene was set for any number of complications which may have arisen, and a wide range of responses by the agencies involved.

The discussion was lively, but it is reassuring to know that those people in charge of operations in their respective fields are confident in the abilities of their members and can respond appropriately.

**Thank you**

Mrs Sheridan and the Pre Primary /Year 1 children would like to thank everyone who came to or helped out at The Biggest Morning Tea.

They would particularly like to thank-

- Mrs Savage for organising the raffle
- Everyone who donated prizes for the raffle
- The mums who helped with the cooking on the Wednesday
- Staff who helped set up, sell tickets and clean away after the event.
- Year 6/7 children for the help.

A total of \$950.00 was sent to The Cancer Council of W.A. to aid research.

***Wagtail Craft***

Due to no response from anyone about the funds in the Wagtail Craft Bank Account the Wagtail Craft committee has wound up its affairs and are very pleased to announce that we have donated \$1000 to our local St John Ambulance sub centre and also \$1000 to Sophies Fund.

**BROOMEHILL RECREATIONAL  
COMPLEX  
MANAGEMENT COMMITTEE  
CHANGE OF SECRETARY**

The BRCMC is pleased to welcome  
**Michelle Hopkirk**  
on board as the new Secretary.  
For all booking enquiries, Michelle can be  
contacted on 0438972580 or at  
[broomehillrc@optusnet.com.au](mailto:broomehillrc@optusnet.com.au)

**SHIRE OF BROOMEHILL—TAMBELLUP****THUMBS DOWN**

To those people responsible for the litter and broken glass left around and on the Broomehill Skate Park. This facility is well used by the children of our community and aside from the safety issues of broken glass on a concrete surface, it sends a poor message to the kids, and to visitors to our towns. Bins are provided, please use them!





## Broomehill Historical Notes

Quite a few years ago Shirley MacDonald began to work through the diaries of her Grandfather, Thomas Norrish (TN) which he wrote when he first came to Eticup to take up farming and the diaries of William Henry Graham (WHG) who was also one of the first pioneers of the Eticup district. Shirley collated all the information both in alphabetical and chronological order. There are many wonderful pieces of information and anecdotes in these diaries and we are proud to share them with the community each month.

**Phillips** - On 6<sup>th</sup> December 1881, Billie Bimbert came to Goblup to get the rams belonging to Phillips, Elverd and Hales. On 24<sup>th</sup> March 1884, Thomas Phillips was appointed Secretary and Collector, Kojonup Road Board. A Mrs Phillips died (at Kojonup?) on 13<sup>th</sup> October 1886.

**Phillips, Rev T** - Mr Phillips, the Minister, was at Goblup on the evening of 17<sup>th</sup> December 1893 and Mr & Mrs Phillips called on 8<sup>th</sup> January 1895. 20<sup>th</sup> January 1895 was the last time for Mr Phillips at Eticup.

**Photography** - At Albany on 11<sup>th</sup> April 1892, TN, Mrs Norrish and two of their children, George and Mary, had their likenesses taken. On 4<sup>th</sup> October 1892, TN gave the portraits of himself and Mrs Norrish to a travelling agent to be enlarged; £5.10.0. for the two. When TN saw the agent in Broome Hill on 13<sup>th</sup> February 1893 and got the enlargements, he commented "Cannot say they look like us now. They were taken about 11 years ago." Of the photographs held in the Museum, many were taken in a studio, probably at Albany, but it is obvious that others were taken by travelling photographers. J.H. Otto was a photographer (amongst other things).

**Poisonous Plants** - On 4<sup>th</sup> January 1880, TN shut up a wether and fed it some Prickly Poison seed in chaff but did not report the outcome. In December 1881, Sam Smith's flock had been in the poison with over 50 sick and 6 dead. On 3<sup>rd</sup> January 1882, TN saw bushes like Narrow Leaf Poison near Pootenup and brought some home to try; no report on this outcome either. On 8<sup>th</sup> July 1882, Sam Smith lost 7 lambs to Box Poison. Later that year, Dick Wilson lost 8 sheep to poison and on 3<sup>rd</sup> December Patrick Garrity had about 30 of his sheep poisoned; he had been shepherding them himself. On 29<sup>th</sup> April 1883, Garrity found about 80 of TN's sheep (shepherd T. O'Brien) in the burnt out poison. The next day, 51 sheep were dead and skinned by sundown. In late 1883, TN's natives were set to clearing poison at McGuire's and in November, Patrick Carmody found 200 of TN's sheep poisoned; shepherd Robert Burns had lost them but not missed them. In four days 113 sheep had died. By 1886, TN reports a concentrated effort to clear poison. He himself went to Chester's camp at Carbadup and grubbed near Garrity's fence. On another occasion, he took all the children out poison grubbing and in December that year William Peate advised that several cattle were poisoned; TN's 3 young bulls, one of which died; 2 of Whitton's dead, 1 of Rogers; 1 from Marleyup; and one of Carmody's missing. The following week another young bullock died. These entries imply that all or most of the neighbourhood cattle were kept in TN's Eticup paddock, in the same way other entries through the diaries indicate that TN "minded" the districts rams. On 7<sup>th</sup> November 1888, TN's son George accompanied Allie Moir and his flock as far as Townsend's to see sheep through the poison. In the 1890's TN's Chinese workmen were put to poison grubbing regularly. In February 1893 there were thousands of young plants at Whearup. In January 1907, TN went to Wagerup and in two days grubbed 202 poison plants, staying at Oak Farm overnight.

### SHIRE OF BROOMEHILL—TAMBELLUP

## BROOMEHILL VILLAGE HERITAGE PRECINCT

In 2010 the Shire of Broomehill-Tambellup received funding from the Great Southern Development Commission to develop plans for the creation of a Heritage Precinct in the Broomehill town centre. As well as providing interpretation of the history of the town, the plan will also provide direction to Council for the beautification of the town centre through plantings, creation of gardens and community areas and enhancement of those which are already in place.

A small committee has been formed to liaise with the consultants, and a draft concept plan has been developed. The plan is available to view at both the Broomehill and Tambellup Shire offices, and your feedback is invited. If you have any comments or suggestions, please complete the 'Feedback Form' which will be available and hand back to counter staff. The plans will be on display until Wednesday 13 July.

AN INITIATIVE OF  
*Making More From Sheep*



Australian Wool  
Innovation Limited



MEAT & LIVESTOCK AUSTRALIA



Department of Agriculture and Food

# It's ewe time!

- ✓ Wean 10% more lambs per hectare
- ✓ Achieve 10% more carcase weight
- ✓ Cut 10% more wool



### THE MUST-ATTEND SHEEP EVENT OF 2011

- **KATANNING:** Tuesday 5th July, Katanning Leisure Centre  
Local contact: Julia Smith (DAFWA) on 98928444
- **NORTHAM:** Wednesday 6th July, Bridgeley Community Centre  
Local contact: David Kessell (DAFWA) on 0428 715 000
- **DANDARAGAN:** Thursday 7th July, Dandaragan Recreation Centre  
Local contact: Hellene McTaggart (WMG) on 08 9651 4008

RESERVE YOUR SEAT TODAY – CALL **1800 675 717**

COST: \$20 per person – payable at the door (for venue and catering)

FOR MORE INFORMATION: [www.makingmorefromsheep.com.au](http://www.makingmorefromsheep.com.au)

EVENT PARTNERS:





# EXPRESSION OF INTEREST



## Participation in the 2011 Hidden Treasures of the Great Southern Spring Flower Festival

### Background

The Hidden Treasures of the Great Southern is a group of eight Shires in the northern and south-eastern parts of the Great Southern region which work together to promote the unique tourism assets of the area. The Shires include Broomehill-Tambellup, Cranbrook, Gnowangerup, Jerramungup, Katanning, Kent, Kojonup and Woodanilling. These Shires and communities are predominantly recognised for the primary industry of agriculture, however they also encompass National Parks and areas of unique botanical interest.

From 16 September to 16 October 2011 the Hidden Treasures Group will hold the inaugural Hidden Treasures of the Great Southern Spring Flower Festival, with support from the Great Southern Development Commission (GSDC) and Tourism Western Australia (TWA).

This region-wide program will add value to the wildflower shows and associated exhibitions that are already held throughout the Great Southern region in the spring of each year. The Spring Flower Festival will integrate a range of events through a centralised coordinator who will work with the existing community based organisations, relevant local governments and individual operators.

**This EOI is an opportunity for Hidden Treasures communities to develop small or large complementary Spring Flower Festival tourism products and/or events. Hidden Treasures role will be to provide Festival overall coordination, joint promotion and marketing of this annual region-wide Spring Flower Festival as a significant tourism event in the Great Southern. A Festival brochure will be produced and widely distributed across the Great Southern region, in the Perth metropolitan marketing and in other regional centres, along with a strong marketing campaign.**

The Festival will include wildflower exhibitions and spring flower related events, we would like to encourage and support all Hidden Treasures communities through this EOI to develop complimentary activities such as local guided tours, open gardens, botanical art classes, special guest speaker and outdoor entertainment at a number of locations throughout districts covered by the Hidden Treasures group.

If you have an existing event, an idea for a new event or would like to hold an event, weather small or large as part of the Spring Flower Festival (*think outside the box!!*) please complete the following expression of interest (EOI) form. If you are interested in providing **catering, entertainment or tour bus services** please contact the Event Coordinator or complete the EOI and we will endeavour to match your request with a participating event.

For further information please contact Festival Event Coordinator Karen Birdseye on 9842 8434 or 0417 235 324. **PLEASE SUBMIT YOUR PROPOSAL BY: 2.00pm on Sunday 3 July 2011 TO [karen.birdseye@bigpond.com](mailto:karen.birdseye@bigpond.com)**

This project is supported by:





## KATANNING & DISTRICTS GARDEN CLUB

Roxaine O'Tooles home was the venue for our June meeting, this was also our A.G.M. The same members were re-elected to hold office for the coming year, ie. President: Gerry Watson, Secretary: Ailsa Thomas, Treasurer: Irene Matthews, Karen Bessell-Browne and Anne Rees will share the job of recorder.

Unfortunately it was a very cold day and members were reluctant to venture too far from Roxaine's lovely warm wood fire, however we did see Roxaine's collection of cacti and succulents on our way into the house and were able to view some of her lovely garden through the windows.

The winners of the monthly competitions for the past 12 months were presented with vouchers for their efforts, Bess Parrott won most points overall, other section winners were Gerry Watson, Ailsa Thomas and Anne Rees.

The club is planning on having a plant stall at the Farmers markets in November. Members are asked to start planting cuttings etc. now - hopefully we will have many interesting plants for the public to purchase.

June competition winners were; FLORAL ART: Gerry Watson & Margaret Wise (equal 1st), FLOWERS: (geranium), 1. Bess Parrott, 2. Bess Parrott, 3. Gerry Watson. TREE or SHRUB: (silver or grey foliage) 1. Pam Garlick, 2. Ailsa Thomas, 3. Karen Bessell-Browne. MY BEST FLOWER: 1. Karen Bessell-Browne, 2. Bess Parrott, 3. Ailsa Thomas. FRUIT or VEGE: 1. Anne Rees, 2. Anne Rees, 3. Margaret Wise. POT PLANT: 1. Bess Parrott, 2nd. Ailsa Thomas.

The meeting for July will be at Bess Parrott's home, 11 Golf links Road on July 12th at 1.30pm, anyone interested is welcome to attend, for any more information about Garden Club call Ailsa (98211828) or Gerry (98211648).

***Garden Tips for the month: Tall bearded Iris like a sprinkling of dolomite. Plant spring flowering bulbs to provide colour once the daffodils have finished. Dahlias that have died back can now be dug. Take cuttings of herbs to replace those that have become too woody.***

Until next month keep well, Ailsa.

**Beyond Gardens**

On June 20 around 70 enthusiastic gardeners from across the Great Southern gathered at the Tambellup Hall for an inspiring afternoon with the 'Beyond Gardens' team of Peter Coppin and John Colwill. 'Beyond Gardens' aims to bring gardening back to basics, without the market hype which abounds in magazines, TV and radio. Through the course of the afternoon, with some humour, Peter and John dispelled many of the 'myths' of gardening, and challenged many long standing gardening practices and beliefs.

The 'Beyond Gardens' events are sponsored by the Water Corporation, and as such, a significant focus was placed on water wise gardening, from creating the right soil environment, to composting, mulching, effective irrigation and appropriate plant selection.

The Water Corporation website has a great range of fact sheets available on waterwise gardening, and also a searchable Water Wise plant selection database which was developed by John Colwill. This can be found at [www.watercorporation.com.au](http://www.watercorporation.com.au). The afternoon was enjoyed by everyone who attended.

The 'Beyond Gardens' road show was brought to Tambellup by the Shire of Broomehill-Tambellup, through funding support of the Dept Agriculture and Food Dry Season Assistance scheme.

**SHIRE OF BROOMEHILL—TAMBELLUP****TAMBELLUP INDEPENDENTLY LIVING  
SENIORS ACCOMMODATION UPDATE**

Council is still waiting to hear the outcome of two major funding applications for this project, to the Royalties for Regions Great Southern Regional Grants scheme, and the Regional Development Australia Fund. These applications represent a significant portion of the funds required to build the six units as proposed, and will complement the funds already committed by Council, the Tambellup Senior Citizens Unit Management Committee and the Tambellup Cranbrook Community Bank. We are aware the competition for the available funds has been intense, and hope for a positive response.

Another funding opportunity has recently arisen through the Great southern Development Commission, and Council staff will be working with the Development Commission to submit an application. We are told the application process is quite involved, and the timeframe is short, however we will be pulling out all stops to ensure the best possible business case for this project is presented.

Kristy Boyle is managing the project, and has recently undertaken an informal consultation of people who responded to a survey sent out in 2009 relating to seniors' accommodation. This activity demonstrated to Council that the need for quality seniors' accommodation was still evident in Tambellup, and the project should continue to be pursued. We will continue to provide updates as the project develops.

**CGS HOCKEY FIXTURES****JULY 2011****SATURDAY 2 JULY, WOODANILLING  
CHALLENGE CUP**

10.30 D GRADE

12.00 C GRADE

1.45 WOMEN

3.30 MEN

**SATURDAY 9 JULY - WOODANILLING**

10.00	D Grade	BH V TA
11.15	C Grade	BH V WO
12.30	Men	BB V TA2
2.00	Men	TA1 V WO2

**SATURDAY 16 JULY**

D & C Grade	Bye
Women & Men	Great Southern Carnival, York

**SATURDAY 23 JULY - KOJONUP**

D & C Grade	Narrogin Carnival
2.00	Men TA1 V TA2
3.30	Women TA V KO1

**SATURDAY 30 JULY - KATANNING**

8.45	D Grade	BH V KA
10.00	D Grade	KO B V TA
11.15	C Grade	BH V KO
12.30	Men	KO1 V TA1
3.30	Men	TA2 V KO2

**SHIRE OF BROOMEHILL—TAMBELLUP**

## LOCAL GOVERNMENT POSTAL ELECTION

### CLOSE OF ENROLMENTS

### Friday 26 August 2011

**Enrolling to Vote**

Local Government Elections are to be held on Saturday 15 October 2011. You may be eligible to be enrolled to vote at the election if you reside in or are an owner or occupier of rateable property within the district.

**Residents**

You are automatically enrolled to vote if you are on the State Electoral roll as at 5.00pm, Friday 26 August 2011. If you are not on the State Electoral roll or have changed your address recently, you must complete an enrolment form.

**Non Resident Owners and Occupiers**

If you are a non resident owner or occupier of rateable property within the Shire and are on the State or Commonwealth electoral roll, you are eligible to enrol to vote, but must submit an *Enrolment Eligibility Claim Form* to the local government, as enrolment is not automatic.

A **non resident owner** who was on the last Shire of Broomehill-Tambellup local government roll continues to retain that status as long as the rateable property to which the enrolment relates is owned. An **occupier** does not have continuous enrolment and should contact staff at the Shire to confirm their enrolment status.

If you are not on the State or Commonwealth electoral roll and own or occupy rateable property within the Shire, you may still be eligible to vote. Please contact the Shire for details.

**Enrolment Forms – Non Residents and Occupiers**

Enrolment Eligibility Claim Forms can be obtained from the Shire of Broomehill-Tambellup and must be lodged with the Chief Executive Officer by 5.00pm Friday 26 August 2011.



**BROOMEHILL GOLF CLUB****Competition – Par  
Date – 4<sup>th</sup> June, 2011**

Nett Winner	Sam Richardson	Score +9
Runner Up	Charles Russell	Score -3
Nine Hole Comp	James Dewar	Score 17 Points
Nearest the Pin No. 10	Philip Russell	
Nearest the Pin No. 17	Charles Russell	
Long Chip/Putt No. 9	James Dewar	
Best 2 <sup>nd</sup> Shot No. 1	Phil Rae	
Nest 2 <sup>nd</sup> Shot No. 16	Sam Richardson	
Best 3 <sup>rd</sup> Shot No. 18	Sam Richardson	

**Competition – Stableford  
Date – 18<sup>th</sup> June, 2011****Sponsor – Great Southern Chiropractic**

Winner	Steve Ryan	Score 42 Nett
Runner Up	Kevin Winspear	Score 39 Nett
Gross Winner	Tim Zadow	
ANZ Nine Hole Comp:		
	Andrew Woithe	Score 20 pts
Nearest the Pin No. 6	Kevin Winspear	
Nearest the Pin No. 10	Tim Zadow	
Nearest the Pin No. 17	Tim Zadow	
Long Chip/Putt No. 9	Phil Russell	
Nest 2 <sup>nd</sup> Shot No. 2	Steve Ryan	
Best 3 <sup>rd</sup> Shot No. 18	Tim Altus	

**Competition – Stroke  
Date – 25<sup>th</sup> June, 2011****Sponsor – Retravisation Katanning**

Winner:	Kevin Winspear	Score 73 Nett
Runner Up:	Charles Russell	Score 77.5 Nett
Gross Winner:	Brant Dennis	Score 83 Gross
ANZ Nine Hole Competition:		
	Steve Irvine	Score 27 pts
Nearest the Pin No. 10	Brant Dennis	
Long Chip/Putt No. 9	Phil Rae	
Nest 2 <sup>nd</sup> Shot No. 1	Simon Hanna	
Best 3 <sup>rd</sup> Shot No. 12	Alan Goodall	
Best 3 <sup>rd</sup> Shot No. 18	Brant Dennis	
Best 3 <sup>rd</sup> Shot No. 5	Phil Russell	
Mens Best Monthly Drive	Sam Richardson	

**Broomehill Ladies Darts 2011**

Results are for Broomehill only  
(HS: Highest Score, HP: Highest Peg, HA: Highest Average)

**30/5/2011**

Imperials v KCT won by KCT 7-2

HS:	140	Jo Taylor
HP:	6	Anne Guazzelli
HA:	31.65	Anne Guazzelli

**6/6/2011**

Imperials v Unique Unit won Unique Unit 9-0

HS:	96	Alto Twist
HP:	51	Donna Blows
HA:	34.40	Alto Twist

**13/6/2011**

Imperials v Dilligaff won by Dilligaff 6-3

HS:	134	Donna Blows
HP:	70	Kelly Bates
HA:	31.79	Jo Taylor

**Broomehill Mens Darts 2011****1/6/2011***Imperial Red def Hazbeen 5-4*

HS:	171	Steve Ryan
HP:	42	Paul Blows
HA:	44.88	Steve Ryan

**8/6/2011***Unit def Imperials Red 4-5*

HS:	133	Steve Ryan
HP:	28	Steve Ryan
HA:	59.61	Steve Ryan

*Hazbeens def Imperials Blue 7-2*

HS:	125	Colin McAndrew
HP:	84	Jacko Guazzelli
HA:	51.58	Colin McAndrew

**15/6/2011***Imperials Red def Imperials Blue 5-4*

Imperials Blue:

HS:	140	Jacko Guazzelli
HP:	20	Simon Hanna
HA:	45.00	Simon Hanna

Imperials Red:

HS:	140 (x2)	Ash Blows
HP:	40	Ash Blows, Ryan Pitts
HA:	45.68	Ash Blows

**22/6/2011***Imperials Blue def ?*

HS:	120	Jacko Guazzelli
HP:	34	Simon Hanna
HA:	49.47	Simon Hanna



*A service will be held at  
St Elizabeth Anglican  
church Broomehill  
at 3.pm on  
Sunday the 31st of July.  
Everyone welcome*



### Did you know ...

Up to 85% of brain development occurs in the first three years of life. How we interact with children during these years determines how they learn and behave for the rest of their lives.

A very successful *'Meet the Professionals'* workshop was held on Tuesday 7<sup>th</sup> June.

Thank you to all the presenters and the parents who attended. Hopefully any questions asked were answered and as parents you now know what services are available and how you can access them.

A workshop on Healthy Eating and Nutrition is planned for next term. Watch out for your invitation!

### MESS FREE PAINTING!

Materials: empty spray bottles  
concrete path  
walls of the house

1. Fill the spray bottles with water.
2. Let children spray walls and path.
3. Allow to dry.
4. Add a few drops of dishwashing detergent and they can 'clean' the walls and paths for you.
5. Instead of a spray bottle give them a bowl of water and an assortment of painting tools - tooth brushes, scrubbing brushes, brooms, pastry brushes, paint brushes, paint rollers.
6. *Make sure you supervise young children around water.*



### BANNERS IN THE TERRACE

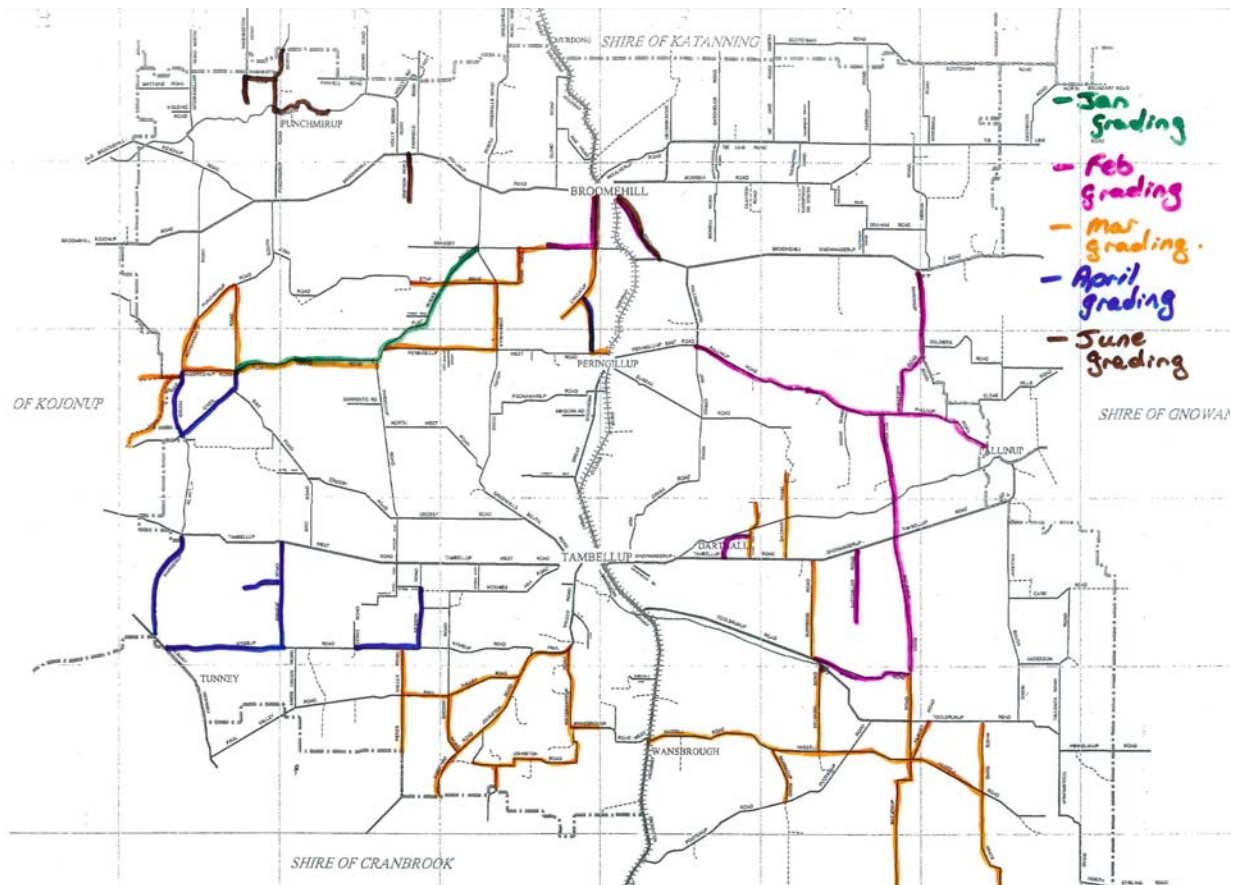
The Annual Local Government Convention will be held in August this year.

The 2011 Banners in the Terrace Competition is one of the State's largest single community arts projects. This annual event is a colourful and vibrant display and last year there were over 90 colourful entries being displayed along St Georges Terrace.

If you are in Perth at any time between Sunday 31<sup>st</sup> July and Saturday 13<sup>th</sup> August it is worth going to have a look. Make sure you look out for the Broomehill-Tambellup Banner.

We would like to thank Rosemary Thorn and Kriya Pineiro for this year's entry.





In May, the Shire of Broomehill-Tambellup was approached by Great Southern Aboriginal Health for support to run a program aimed at local Aboriginal men, to improve physical and mental health and social wellbeing. Council agreed to support the project, which will involve monthly structured physical activities, and information sessions with various health services. The first day ran successfully, with fifteen people taking part. By all accounts, the paint ball was very well received and fiercely contested!! Congratulations and every success to Ray Shaw and Chris Penny from Great Southern Aboriginal Health on their initiative in organising the program, and to all who are participating.



Its always great to hear of a local star on the rise, and one local who is steadily rising through the ranks of hockey is Tambellup's Penny Squibb.

Aged 18, Penny recently gained selection in the State Under 21 ladies hockey team, to play at the national tournament in Canberra during July. Penny is one of the youngest members of the squad, following three years selection in the State Under 18 squads.

Penny is also a member of the Diamonds development squad, the WA based team which plays in the national Australian Hockey League competition. Well done Penny, and best wishes for your continued success!



## Bunbury Junior Hockey Carnival

Around 134 junior hockey teams from across the south west and Perth metro area descended on Bunbury over the June long weekend to participate in the 2011 South West Junior Hockey Carnival. Central Great Southern nominated 5 teams this year, Under 11 boys and girls, Under 13 boys and girls, and Under 15 mixed. The Broomehill and Tambellup Hockey Clubs were represented in all CGS teams, and participated well.

The teams enjoyed mixed success over the weekend, with a high standard of hockey played across the grades. Standout stars were the CGS Under 11 boys, coached by Miles Barritt, who won their division over 14 other teams. Representing Broomehill were Lewis Barritt and Ryan Tuffley, and from Tambellup, Shannon Hull and Jake Kondakov.

Congratulations to all our local players who participated, on your hockey and excellent sportsmanship displayed over the weekend. Many thanks to parents for accompanying their children, and also to those who coached, managed teams or generally ran around after the kids – see you all again next year!







## Henry heads home

MEDIA RELEASE 27 May 2011

The first Malleefowl chick to be captive-raised at the Yongergnow Australian Malleefowl Centre has been released into the wild.

Fauna consultant Dr Jeff Short visited the centre this month to help staff capture the chick called 'Henry' before banding and releasing him into bushland at the Wadderin Sanctuary, near Narembeen.

Yongergnow administrator Vicky Bilney said Henry was incubated at the centre and raised over the past 14 months with his seven siblings, three of which did not survive.

She revealed Henry was adapting well to his new home at Wadderin, a 520 hectare reserve protected by a feral-proof fence.

"Despite the dry conditions, Henry appears to be settling in well and has been seen happily exploring his new home. Hopefully he'll find himself a mate soon," she said.

Yongergnow chairman Ken Pech said the remaining birds at Yongergnow were being kept in a large aviary for the public to view.

Other younger chicks destined for release back in the wild later this year were being kept in separate aviaries nearby, he said.

"We have another seven chicks that are six months old, two of which come from eggs found at a mine site in WA's north and the other five were found locally. We have captive-reared these chicks for release at Wadderin later this year so Henry really is a pioneer."

Unique among birds, Malleefowl chicks are independent from hatching and must dig their way through the mound (nest) before finding their own food and avoiding predators such as foxes, cats, goannas, raptors and currawongs.

Of all the chicks that hatch in the wild, it is understood that less than 2% survive. This is compared to a survival rate of 62.5% in captivity.



**Regional  
Development**  
*Australia*



**Australian Government**

## RDA Newsflash

15 June 2011

### Community Action Grants now open

Community groups can now apply for small grants to help fund local environmental and sustainable agriculture projects.

Parliamentary Secretary for Agriculture, Fisheries and Forestry Dr Mike Kelly has announced that \$5 million will be available through the 2011-12 Community Action Grants round.

Grants of between \$5,000 and \$20,000 are available to help local community groups undertake activities such as revegetating landscapes, removing weeds, controlling pests, holding field days and improving sustainable land management practices.

Since Community Action Grants were announced in 2009, 877 projects have received funding worth more than \$15 million.

Applications for the 2011-12 Community Action Grants round will close Monday 1 August 2011.

More information, including how to apply, is available from [www.nrm.gov.au](http://www.nrm.gov.au) or by calling 1800 552 008.

## BOOT ROCK BOBTRAK and Farm Works



your “LOCAL” people servicing Broomehill, Tambellup and surrounds

Still your best choice for:

### Quality Domestic Earthmoving

House and Shed Pads, Site Levelling, Work to Plans

Trenching, Pipe Laying, Pallet lifting

Yard Cleanups, Spoil and Waste Removal

8” - 12” - 16” & 24” Post Hole Boring,

Urban and Rural Fencing, Gate Swinging

Sand, Gravel, Roadbase, Concreting Blends and

Garden Soils - subject to availability

Landscaping and Contouring

Slashing and Water Carting

Sheep Yard Cleanouts

### Now with the Backhoe we can also do:

Open and Closed Drainage

Tree and stump Removal

Septic/Sewerage Earth Works

On Farm Animal Pits and Burials

Soak Construction and Cleanouts

Soil Profile Pits and Test digging

### And introducing our Equipment Hire:

Portable Work Station (Trailer mounted Welder Generator with:

Air Compressor, Drop Saw, Grinder, Cutter, Vice and shelter.)

Cement Mixer, 5 kva Generator, Plate Compactor

Ph. Jacko or Anne on: 0439 241 309 or 98 241 309 for  
Free Quotes or General Advice





## PRESS RELEASE

10<sup>th</sup> June 2011

### Title: Designing Resilient Farming Systems

Holistic management is a systems-thinking approach to managing land resources that builds biodiversity, improves production, generates financial strength and improves the quality of life for those who use it. Land managers in WA and around the world are using the framework to make grazing, land management and financial decisions that positively impact on their profitability, land health and productivity. Allan Savory, who founded the concept, will be presenting in Fremantle, WA on the 8<sup>th</sup> of July at the "Designing Resilient Farming Systems" seminar along with four other highly acclaimed speakers. Savory, who began his discovery working as a wildlife biologist in Rhodesia in the 1960's, developed the idea after investigating the causes of desertification. He concluded that the spread of deserts, loss of wildlife and the resultant impoverishment of people related to the way that people made decisions, whether they were on the land or not.

Tony Lovell, a chartered accountant with over 25 years experience, will be presenting on the economics of decision-making. Lovell has been working with holistic management educator Bruce Ward in Australia since 2005, and has set up a company to identify and develop revenue streams within whole-farm businesses as a means to develop resilience. "Holistic management principles not only give people a broad, long-term outlook, but also the logical and simple steps to take – and it's the ability to consistently make better decisions that truly underpins success," he said.

"This decision-making process can be applied to any business in any industry," Wagin farmer and Bugs and Biology Grower Group Chairman Robert Rex said. "Once the business owners develop their goals, then they go about making management decisions that take them towards their goal."

"This event is being hosted by the Bugs and Biology Grower Group to provide value to land managers and agricultural professionals throughout the state – whether you're a 100% cropper in Esperance or a station owner in the Gascoyne," Robert said.

"Since we have taken on this decision-making process, we feel more in control and can be proactive when dealing with things like poor seasons. Furthermore, we are excited about running a profitable and resilient business that offers us a desirable quality of life," Robert said.

This will be the second time that Allan Savory has come to WA, and will present alongside Professor Lynette Abbott, General Michael Jeffery and Tony Lovell.

For more information, contact Sonya Harcourt-Smith on 98231577 or visit [www.bugsandbiology.org](http://www.bugsandbiology.org)

17<sup>th</sup> June 2011

### Title: Making good decisions

Decision-making frameworks will be a major focus of the Designing Resilient Farming Systems field day and seminar on 7<sup>th</sup> & 8<sup>th</sup> July in Perth. Guest speakers include holistic management founder, Allan Savory, Tony Lovell, General Michael Jeffery and Pfr Lynette Abbott. Tony Lovell, a chartered accountant who will present on the economics of decision-making, sees that holistic management principles provide a fundamental basis for successful business. "When it comes to decision making, it is not just the good decisions we make that are important, it is also the poor decisions we are able to avoid that help us be more successful," Tony explains.

"Remembering back, when it came to canned salmon and tuna, it wasn't just the fish John West selected that were important, it was "the fish John West rejected that made John West the best", Tony said.

Holistic Management is not a set of strict rules and regulations demanding a "one size fits all" solution to decision making, rather it provides a structure on which we can build a more profitable and sustainable future for ourselves, our families, and our communities. Megan Christie and partner Rupert Richardson, have been farming their 3000 acre property in Mundijong holistically since 1999, and will host participants for a field walk on Thursday 7<sup>th</sup> July. "The difference between a good decision and a bad decision depends on who you are and what you are trying to achieve," Megan said. "We have been continuously developing and refining our vision over this time, so we have a very clear idea of where we want to be, Megan explained. "We use the framework provided by Holistic Management to simply and quickly test any possible decision we need to make, and see whether it takes us closer to our desired future or not. "For most of us we must live within a tight budget, and it is impossible to spend the same dollar on two different things. So the real financial impact of making a good decision is we avoid spending money by making a poor decision," Megan said. Just as with canned tuna, it is those decisions we reject, that help make our decisions the best.

For more information, contact Sonya Harcourt-Smith on 98231577 or visit [www.bugsandbiology.org](http://www.bugsandbiology.org). Limited tickets are available for purchase via the Mingenew-Irwin Group.

22<sup>nd</sup> June 2011

### Title: From the soil up

Farmers have the opportunity to get practical soil health principles and management practices from Professor Lyn Abbott at the Designing Resilient Farming Systems seminar in Fremantle, on the 8<sup>th</sup> July 2011. Soil biological processes are essential for sustaining all natural ecosystems, and Professor Abbott sees that incorporating the principles of soil biological fertility into agricultural practices is an essential challenge for modern farming. "Many Western Australian soils had low nutrient levels in their original state, and land use for farming in many instances has increased nutrient levels but decreased carbon levels," Professor Abbott explains.

"The complexity of soil interactions may make an argument for feeding the plant rather than the soil itself, but undervaluing the fundamental importance of soil microbiology is a critical issue for production, profitability and the sustainability of farming systems."

Soil fertility extends far beyond nutrition and fertilisers, and the online learning resource "Soils are Alive", which has been developed specifically for farmers, summarises ten principles and associated management practices that Professor Abbott urges farmers to consider.

"Arbuscular mycorrhizal fungi can increase phosphate uptake into plants in P-deficient soils, yet fertiliser calculations often ignore this, and can even negatively impact on this free service offered by soil organisms."

"We also know that soil organisms are most abundant in the surface layers of soil and that organic matter is essential for nutrient cycling, which means that controlling erosion and maintaining groundcover are total wins for plant growth," Professor Abbott says.

The ten principles for soil biological fertility are linked to land management guidelines. "This sets up a simple framework - if the decision-maker validates the principle, then they look into the management options that will take them closer to achieving their goals in farming," Professor Abbott explained.

For Rupert Richardson and Megan Christie, whose farm will be visited on Thursday 7<sup>th</sup> July as part of the Designing Resilient Farming Systems event, soil biomass is the ultimate profit driver of their business. "Soils are most definitely alive and part of our goal is to grow the soil and its capability to cost-effectively produce as much plant biomass as possible," Megan said.

"Producing a commercial product and increasing biological fertility aren't mutually exclusive, and actually, we can't see how farming for the long term can be achieved any other way than combining these aspects."

Resources such as the 'Soils Are Alive' online book will be promoted as part of the Designing Resilient Farming Systems seminar on the 8<sup>th</sup> July at the Maritime Museum, where Professor Abbott will be joined by other internationally acclaimed speakers including Allan Savory and General Michael Jeffery.

For more information, contact Sonya Harcourt-Smith on 98231577 or visit [www.bugsandbiology.org](http://www.bugsandbiology.org).

Limited tickets are available for purchase via the Mingenew-Irwin Group.



## DOES ANYBODY HAVE

An old unlicensed single axle caravan  
for renovating?

WILL PICK UP

PRICE

NEGOTIABLE

0427277376



## Rie's Beauty

*Mobile clinic servicing the Great  
Southern*

*Appointments at a time and in a place that suit you.*

*Call 0428928987*

*All beauty & skin treatments*

### *Including*

Acrylic nails,  
Deep tissue massage  
Full range Male &  
Female waxing

Bookings essential  
Gift vouchers &  
Packages

## For Sale

12FT Dinghy – Car Topper

Anchor and Oars

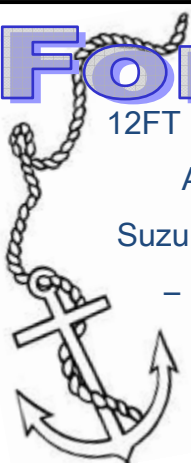
Suzuki 6hp 4 stroke motor

– as new condition

\$1400.00

Phone 0428 241 306

No skippers ticket required  
for this size boat.



# NEED A SHED?

**AUSPEX STEEL**  
Quality Sheds & Buildings

why **you** need an  
**AUSPEX shed**

- Hot dip galvanized universal beam columns
- Galvanized open web trusses
- Clearspan from 9m to 60m
- In house fabrication
- Advanced design & engineering
- Professional Erection
- Personalised Service
- Auspex quality
- Custom built to your requirements

**BONUS**  
Present this advert  
with your shed order to  
receive your gift\*

**9827 1220**  
[www.auspexsteel.com.au](http://www.auspexsteel.com.au)  
Email: [sales@auspexsteel.com.au](mailto:sales@auspexsteel.com.au)  
Builders Registration No. 12984

\*Visit our website for more info.



## Great Southern Sheep Services

ABN: 14 193 516 626

Great Southern Sheep Services offers a wide  
range of sheep husbandry services including:

**Mulesing & Marking  
Vaccinating & Crutching  
and**

**Plunge Dipping**  
as part of a customised lice  
eradication program.

Call

**Neil Eastough**  
M: 0448 390 820  
H: 9828 1001

### REIKE PRACTITIONER

Anna Black *Qualified Reiki practitioner of*

## *Indigo Touch*

Mobile Service: Wednesday 9.30am—4.30pm

By appointment—0409 470 148

*Reiki is a simple, natural hands-on healing  
technique that helps in relaxation, and the release  
of stress. Reiki is also great for relaxing tense  
muscles; it can also help the healing process of many  
ailments of the body.*

Session cost \$45 allow 45min—1 hour

FIRST TIMER OFFER—\$5 OFF

*Member of Reiki Australia*



## Shadows Crutching Services

Four stand mobile crutching unit  
ready to go!

Competitive Rates, Clean Job  
and No Worries.

Contact Mark

0439 945 955



## TINY'S SHEARING SERVICE

TAMBELLUP

Work Wanted

Ring Trevor for dates

9825 1199 or 0429 684 732

## Threads On Line

Tambellup Railway Platform

Email—coralgreen@bigpond.com

9825 1542

Open Tuesday and Thursday 10am—  
3pm or by appointment



*Book now  
for some  
pampering!*

*Contact Amelia on 0439 240 393  
for a party!*

*Beautiful products, great gift ideas,  
good for fundraising events!  
Individual orders are also welcome.*

## Tambellup Post Cafe

Janene and Peter  
9825 1169

Open daily for  
coffee and cake.  
Dine in or take  
away.



## Tambellup B & B

Trevor & Aileen Prout  
27 Garrity St (Gt Stn Hwy)

9825 1182

tprou@katel.net.au

3 Bedroom house, fully furnished,  
all linen supplied.  
Self Catered or Bed and Breakfast  
Accommodation



## STEVE KEMP

Split Cycle Air Con,  
Installation & Decommissioning  
0437 094 462

PO Box 120  
Broomehill WA 6318

ARC: L066582



WHEATBELT SOUTH

Scott  
Ballantyne  
Manager

Great Southern Regional Business  
Association Inc, PO Box 161, Narrogin

Office Telephone: 9881 3000

M: 0437 209 692

E: gsrba@westnet.com.au

OFFICE HOURS—10.00am – 3.00pm  
Monday to Friday

# Sheep Manure

For Sale  
\$5.00 bag  
Corey and Shannon Hull  
9825 1176




## RuralTech.

Computer Services.

Paul R Pellant.  
Telephone: 98253068  
Mobile: 0417 955 601.  
Email: mail@ruraltech.info  
Website: www.ruraltech.info

We come to you, mobile computer problem solving.  
Repairs - upgrades - networking - new systems - 2nd hand sales - software problem solving - website design and publishing - in home computer lessons.  
For free advice just contact us - no fix no cost to you.



## MULTIPARTS

KATANNING  
9821 4166



*There's always better value at CRT.*  
WWW.CRT.COM.AU

*Your Local Bloke*



## THE RURAL MARKETING SPECIALIST

www.primaries.com.au

**LIVESTOCK** - Peter Sheridan 0428 872 911  
Wayne Fuchsbichler 0429 314 703




**WOOL** - Tim Chapman  
0427 857 552  
Matt Pedersen  
0428 929 751

## PJ HAMS STOCK CARRIER

Contact Phil  
0427 251 133  
AH 9825 1133

Reliable  
Local  
Affordable



## Petticoat Lane Op-Shop

OPEN - Thursday 1pm - 3.30pm & last Saturday of the month  
10am - 12noon.  
Broomehill CWA Rooms  
42 India St

100's of half priced clothes, linen, household items, toys and more, or all you can fit into a bag for \$5.00.  
Come in and pick up some winter woollies to keep you warm and a book to read for those long cold nights.  
4kg bag of cut rags \$5 ea great for workshop, garage or household use.




Broomehill / Tambellup RBC

Rams for sale, easy care EBV's available.

9825 3083  
0419 193 744

## Lee Jamieson's Computer Services

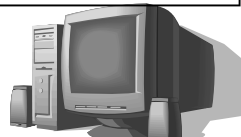
Phone: 0427 040 900  
Fax: 9825 1582  
Email: leejam@gmail.com

- Computer Repairs
- New Computer Systems
- "How do I use this thing?" Training
- Basic Office Suite Training
- Internet Help
- Virus and Spyware removal

No fix, No cost.  
I'll come to you or drop off in town.

**Call me with any questions**

Based in Tambellup, but servicing Broomehill, Cranbrook and Gnowangerup







**JAMES BEATON**  
**KJB PLUMBING AND GAS**  
 PL LIC 6270 GF 007353

For all your residential or commercial plumbing and drainage. Maintenance plumbing and gas installation.

**0419 909 794**  
 PO BOX 15, BROOMEHILL, 6318

*Judy K's Place*



*Judy Kemp*  
*Qualified Beautician*  
 9824 1071

Call today for personal service.  
 Facials, Manicures,  
 Pedicures, Waxing and Tinting.

GIFT VOUCHERS AVAILABLE

**SAVE FASHION**

Dressmaking—Repairs—Alterations

Bridal, Evening wear, Day wear  
 (casual or tailored), Formals, Special Occasions,  
 Mens Casual wear.

Jan Vesey  
 9824 1405




**Hully's Spraying Service**

SLASHING  
 SERVICE ALSO  
 AVAILABLE

Call Laurie  
 9825 1176  
 0428 251 177



Kristy Boyle  
 M: 0417 986 653  
 T: 9825 1081  
 E: kristy@jewelpani.com.au

Beaded Balinese  
 jewellery and gifts.  
 Charm beads and Accessories  
 W: www.jewelpani.com.au

House to rent in Denmark

***The Denmark Getaway***

5 min walk from town centre  
 4 bedroom


For further details 9848 2055  
<http://www.denmark.com.au>

**Holiday House—Bremer Bay**

13 Bennett Street Bremer Bay

House available to rent from \$90p/night

Fully equipped. 3 bedroom, 1 bathroom  
 Supply own linen.



Contact Emily Hardie on  
 9824 1239 or 0408 900 337

Holiday Home For Rent  
**"Stilts"**

8 Murphy Place, Bremer Bay  
 Brand New 4 Bedroom/2 Bathroom Home  
 Sleeps 10  
 Doonas, Pillows and Sheets Supplied

Contact—Deb La Rosa, 0408 236 094  
 Bremer Bay Accommodation  
[www.bremerbayaccommodation.com.au](http://www.bremerbayaccommodation.com.au)

Mention this add when enquiring.


**HOLLY BULK HAULAGE**  
For all your BULK HAULAGE &  
LIQUID FERTILIZER carting needs  
call Charles today on 0409 761 346



*Henry Jones*  
*Winery and Cafe*  
*A unique European dining experience*  
Open Tuesday—Sunday  
India St, Broomehill  
**9824 1513**



**Helen Bignell Physiotherapy**  
9831 2237 or 0438 137 851  
Kojonup Hospital.  
Open Monday, Wednesday  
and Friday.  
Same day appointments  
usually available



**Hannaford Seedmaster Services**  
Derek Batchelor  
9824 1360  
0428 241 306  
For all your cleaning,  
grading and seed  
treatment requirements.  
Katanning and Districts




Need some general maintenance, gardening,  
painting, roof tiling or cleaning done around  
your house?  
Why not call Lance and Jo the  
**Handy Husband  
& Wife Team**  
Available to do most things at very  
reasonable rates.  
Ph/Fax 9824 1552, Mobile 0422 213 274



We have moved !!!  
**9 Taylor Street Katanning**  
Open 5 days/wk and 1 Sat/month  
**9821 7999**  
**GREAT SOUTHERN  
Chiropractic**  
complete community care



  
**Christine Groves**  
*healthcare for body, mind & spirit*  
**NATUROPATH**  
Health management ♦ Herbal Medicine  
♦ Nutritional Medicine  
Homoeopathy ♦ Iridology ♦ Aromatherapy  
♦ Bowen Therapy  
Australian Bush Flower Essences ♦ Thought Field Therapy  
❖ Health Fund Rebates available  
❖ Member ANTA (Australian Natural Therapists  
Association)  
2197 Beejenup Road, Tambellup, WA 6320  
**CHRISTINE IS NOW AVAILABLE FOR  
CONSULTATIONS IN ALBANY**  
*For further information or to enquire about  
an appointment in Tambellup or Albany  
please ring 0428 258 253 during business  
hours.*  
**Thankyou**



# GRADER HIRE



For all Grader Works contact Gray  
Carter 0429 983 836.

Doug Williams has also joined the team.

## BROOMEHILL TRANSPORT SERVI CE



### GINO BASANESE

P/F 9824 1235 Mobile 0429 112 624, UHF channel 40

For all your livestock cartage.

Sheep anywhere, Cattle anytime!

## Dilley's Electrical Service

PO Box 17  
Broomehill WA 6318



Electrical Contractor EC8885  
Phone David  
on  
0409518415

ABN: 73 272 987 956

For all your electrical needs

## Broomehill Post Office & Hardware



Nuts, Bolts, Screws, Tools, Drill Bits, Tek Bits, Cement, Potting Mix,  
Fertilizer, Retic Pipe & Fittings, Storm Water Pipe & Fittings, Adhesives  
and Other Sealants, Spray Cans in Various Colours  
Portable Toilet products and Spares also Available on Request.

**Open Monday – Friday 8:30am till 5:00pm also  
happy to open on the weekend Just call.**

**Murray**

**9824 1246 Mobile 0429 796682**

## Broomehill Imperial Hotel

9824 1222

Open from 12 noon  
7 days a week

Counter meals  
12-2pm & 6-8pm

Steak Nights  
(Wednesdays)

Jag the Joker (Friday)  
Pizza Nights (Saturday)  
Roasts (Sunday)



## Broomehill Contractors

Super Spreading

Mulesing

Grain Carting



Kevin

9824 1218 or 0427 961 810

## BROOMEHILL BULK HAULAGE



For all of your grain, lime, fertiliser and gypsum cartage. 5 to  
75 tonne.

Contact Barrie or Monica  
9824 1059, 0427 591 024

## BOOT ROCK BOBTRAK & FARM WORKS

Your LOCAL people servicing Broomehill, Tambellup  
and surrounds.

**"Quality Domestic Earthmoving at Competitive Rates"**

House and Shed Pads, Site Levelling, Trenching, Yard Cleanups, Post  
Hole Boring, Waste removal, Urban and Rural Fencing, Pallet lifting, Sand  
and Gravel also some Garden Soils - subject to availability.

Phone: Jacko or Anne  
0439 241 309  
or 9824 1309



WATER  
CARTING  
AVAILABLE

**POSTAGE  
PAID**

# TO THE HOUSEHOLDER FROM BT TIMES

**SHIRE OF BROOMEHILL—TAMBELLUP  
46—48 NORRISH ST  
TAMBELLUP WA 6320  
(08) 9825 3555**

## CALENDAR

### JULY

- 4 Hidden Treasures
- 7 First Aid Course
- 12 TA Agricultural Society Meeting
- 21 Council Meeting
- 26 Jason Akermanis Night

### AUGUST

- 1 Hidden Treasures
- 6 Tambellup Hockey - home game
- 12 TA P&C Quiz Night
- 13 Broomehill Hockey - home game
- 26 Daffodil Day Fundraising Evening
- 26 Local Government Election - Close of Enrolments

### **ADVERTISING RATES**

#### Local Business and Community Groups:

Full Page	\$66 inc GST
Half Page	\$33 inc GST
Quarter A4 page	FREE
Eighth of A4 page	FREE

#### Out of Shire:

Full Page	\$66 inc GST
Half Page	\$33 inc GST
Quarter A4 page	\$17 inc GST
Eighth of A4 page	\$9 inc GST

### **SUBMISSION DETAILS**

Please forward all Community News, Events and other information to;

EMAIL; [news@shirebt.wa.gov.au](mailto:news@shirebt.wa.gov.au)

FAX; 9825 1152

POSTAL; 46-48 Norrish St  
Tambellup WA 6320

By the 25th of the Month.